

Resource Handbook

We hope that this *Resource Handbook* will be helpful to you now and in the future. The information is as up to date as possible, however services often change. If you cannot find what you are looking for, please contact a member of the Family Service Staff and they will try to help you. This directory is not meant to include all services, just those we felt were more important to the families we service. We have many additional resource guides in the Family Services' office and would be glad to have you come in and take a look!

TABLE OF CONTENTS

Department of Human Services Reference

- I Alcoholism / Drug Abuse
- II Children's Services
- III Education Opportunities
- IV Employment and Training Guidance
- V Health Services
- VI Legal Services
- VII Nutrition Services
- VIII Clothing
- IX Family Field Trips and Fun
- X Senior Citizens
- XI Family Support and Emergency Services
- XII Fuel Assistance Programs
- XIII Other Frequently Used Resources
- XIV Emergency Numbers

R. I. Department of Human Services

Division of Economic and Social Services Information and Referral: Steve Brunnell 464-3361

Services: Provides financial, medical, and social services to families and individuals whose income is inadequate to meet basic living needs. The income maintenance services include *Temporary Assistance to Needy Families (TANF)*, *General Public Assistance (GPA)*, *Medical Assistance (MA)*, and *Food Stamps*.

Local Offices

Coventry

195 MacArthur Blvd.
Coventry, RI 02816

828-2240

East Greenwich

TANF, MA, and GPA
205 Main Street
East Greenwich, RI 02816

886-8651

Warwick

3275 Post Road
Warwick, RI 02886

**738-2000
ext. 6202**

West Greenwich

194 Breakheart Hill Road
West Greenwich, RI 02817

397-4234

West Warwick

600 New London Avenue
Cranston, RI 02920

462-6500

Alcohol / Drug Abuse

Alcoholics Anonymous

410 North Broadway

438-8860

or

East Providence, RI 02914

1-800-439-8860

(24-hour answering service)

Helps alcoholics looking for help. They are the central office for all AA groups. Literature is provided for a donation. No fee for general service.

Warwick Inter Group

Spanish Speaking Inter Group (in Providence)

739-8777

946-0060

Al-Anon / Al-A-Teen

106 Rolfe Square

Cranston, RI 02910

781-0044

Provides help to families of alcoholics (Al-Anon) and young alcoholics (Al-A-Teen) by offering friendship and shared experiences. Referrals made to support group members.

Butler Hospital Alcohol and Drug Treatment Services

345 Blackstone Blvd

Providence, RI

455-6200

Serves ages 13 years and older with counseling services, including individual, group, and family therapy. Detoxification program is also available. Fee involved, most insurance plans accepted. House: 8:30 AM—3:30 PM.

Channel One

111 Greenwich Avenue
Warwick RI 02886

or
PO Box 9525
Warwick, RI 02889

739-5230

Offers substance abuse prevention program for youth as well as group projects and other activities. Serves Kent County families. No fee for service. Hours: 8:30 AM—4:30 PM, Monday—Friday. Some Evening Programs Available.

CODAC

1052 Park Avenue
Cranston, RI 02910

461-5056

Programs include individual, group, and family counseling services, and short-term methadone detoxification. Also community services and school drug education, information, and referral services. Hours: 9:00 AM—8:00 PM Monday—Thursday, 9:00 AM—5:00 PM Friday. Sliding fee scale.



Alcohol / Drug Abuse Cont.

Counseling and Intervention Services (CIS)

738-0033

422 Post Road
Warwick, RI 02887

Provides treatment and prevention programs for drug and alcohol programs for drug and alcohol abuse, educational seminars, parent effectiveness training, and various support groups. Program offered state-wide. 24 hour answering service. Sliding fee scale. Hours: 8:30 AM—9:00 PM, Monday—Thursday, 8:30 AM—4:00 PM Friday, 9:00 AM—5:00 PM Saturday.

Kent County Mental Health Center:

738-4300

50 Health Lane
Warwick, RI 02886

301 S. Centerville Road (Summit Plaza)
Warwick, RI 02886

732-5656 or 738-1338

Services to families with alcoholism or drug problems. Hours: 8:30 AM—8:00 PM, Monday-Thursday, 8:30 AM—4:30 PM, Friday. Medical Assistance accepted, other insurance plans accepted with pre-authorization.

Marathon House

331-4250

Administrative Offices
131 Wayland Square
Providence, RI

In-patient and out-patient for substance abuse counseling. Fees are based on a sliding fee scale. Someone available by telephone 24 hours a day.

Residential Unit for Adult Men and Women
PO Box 420
Exeter, RI 02822

1-800-422-3344

Sympatico Out-Patient (Someone available 24 hours a day)
Wakefield, RI

783-0782

Narcotics Anonymous

1-866-624-3578

Helps those with problems with drugs looking for help. No fee for general service. Call above numbers to locate a meeting you are comfortable with.

Parents Against Drugs (Talbot Treatment)

828-6373

1071 Main Street
West Warwick, RI 02893

828-6375
276-4020 (PM)

Out-patient substance abuse counseling agency with services available to people experiencing problems with drugs, either directly or indirectly. Services include intake,

Alcohol / Drug Abuse Cont.

assessment, individual, group and family counseling, referral, treatment, physical, psychological, educational, vocational, and legal assistance, early intervention services, and after-care. Monday—Wednesday by appointment only. Fees on a sliding scale or most insurance plans.

Rhode Island for a Drug Free Community 454-7210
30 Exchange Terrace
Providence, RI 02903

Talbot Treatment Center 276-4600
Administration
Woman's Day Treatment Groups 276-4604
Out-Patient 276-4612
90 Plain Street
Providence, RI

Detoxification 785-8383
265 Oxford Street
Providence, RI

Residential 785-8380

Supportive living for adult men and women in a home-like atmosphere with an on-going therapy program for the rehabilitation of alcoholics. Several residential facilities. Day treatment for women and children. Fees assessed. Insurance required for detoxifications. Medical Assistance accepted. No longer state-funded.

Veterans Hospital Treatment Center 273- 7100
Main Building, 3rd Floor
Davis Park
Providence, RI

Multi-model out-patient treatment of veterans with alcohol dependence. No fee. Hours 8:00 AM—4:30 PM. *Veterans Only*

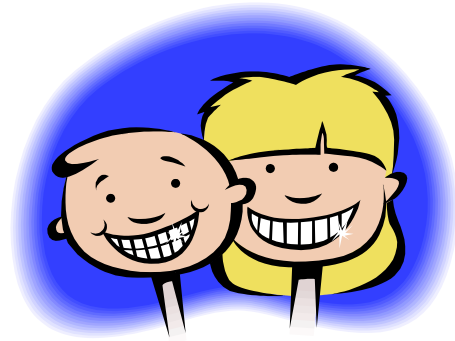
Children's Services

Autism Society of RI

738-8922

Gateway Plaza
Suite 204
1645 Warwick, Ave.

Support and information.



Bay Net

732-4666 ext. 109

PO Box 9476

Free comprehensive childcare and family support service net work for income eligible children and families.

CANTS (Child Abuse Neglect Tracking System)

1-800-RI-CHILD

1-800-742-4453

Child abuse hotline. Per Rhode Island law all known or suspected cases of child abuse must be reported here.

Children and Adults with Attention Deficit Disorder (CHADD)

943-9399

PO Box 603420

Providence, RI 02906-0820

A non-profit, parent -based volunteer organization formed to better the lives of individuals with attention deficit disorder.

Summitt Plaza

300 Centerville RoadSummitt Plaza

300 Centerville Road

CHILD, Inc.

732-5200

Central Office

160 Draper Avenue

Warwick, RI 02889

23 Cady Street

Coventry, RI 02816

823-3228

849 Centerville Road

Warwick, RI 02886

823-3777

28 Payan Street

West Warwick, RI 02893

828-2888

A private, non-profit agency providing comprehensive child development services to low-income young children and their families in Kent County, Rhode Island. CHILD, Inc. operates the Federal Head Start and Early Head Start programs for Kent County, as well as Jump Start, a community based therapeutic preschool program, and other collaboratives with the Warwick School Department. Provides extensive decision making role to parents of children enrolled in its programs.

Children's Services Cont.

Child Mental Illness / AMI-CAN

432-1205

Bradley Hospital
1011 Veterans Memorial Parkway
East Providence, RI 02915

Support and education groups meet twice a month at Bradley Hospital concerning mental illnesses such as depression, manic depression, attachment disorder and others. Contact Christine Brown.

Early Intervention Programs

Early intervention is a federally mandated program to promote the growth and development of infants and toddlers with developmental challenges. EI is designed to serve eligible children between birth to three years old and their families. The foundation of EI is the partnership between families and professionals. The program will serve any eligible child/family regardless of income or eligibility to pay.

The Certified Early Intervention Providers in Rhode Island are:

<i>Children's Friend and Service</i>	<i>621 Dexter St.</i>	<i>Central Falls</i>	<i>729-0008</i>
<i>Family Service</i>	<i>55 Hope Street</i>	<i>Providence</i>	<i>331-1350</i>
<i>Family Resources Community Action</i>	<i>245 Main St.</i>	<i>Woonsocket</i>	<i>766-0900</i>
<i>Hasbro Children's Hospital</i>	<i>593 Eddy St.</i>	<i>Providence</i>	<i>444-3201</i>
<i>James L. Maher Center</i>	<i>120 Hillside Ave.</i>	<i>Newport</i>	<i>848-2660</i>
<i>Meeting Street Center</i>	<i>667 Waterman Ave.</i>	<i>E. Providence</i>	<i>438-9500</i>
<i>Trudeau Memorial Center</i>	<i>250 Commonwealth Ave.</i>	<i>Warwick</i>	<i>823-1731</i>
<i>Trudeau Memorial Center</i>	<i>350 Kingstown Rd.</i>	<i>Narragansett</i>	<i>783-6853</i>

Kent County CASSP (Child and Adolescent Service System Program)

PO Box 1656

738-4300

East Greenwich, RI 02818

CASSP is a community based and family focused program for children and adolescents with behavioral and emotional problems. CASSP helps communities plan and develop comprehensive services so these children and adolescents can remain with their families and/or in the community whenever possible.

Kent County Comprehensive Emergency Services (CES)

885-7400

1285—A South Country Trail
East Greenwich, RI

50 Health Lane (Main Office)
Warwick, RI 02886

738-4300

Services to families in the Kent County area in crisis through Kent County Mental Health. Short term, no fee, 24 hour answering service.

Children's Services Cont.

Kent County Mental Health Center

732-5656

Youth and Family Services
Summitt Plaza
300 Centerville Road
Warwick, RI 02886

Individual, family and group psychotherapy for children, youth, and families. Psychiatric assessment and evaluation. Programs include:

Comprehensive Emergency Services (CES)

A short term (60 day) home based program providing emergency services in times of family crisis to prevent or intervene in potential child abuse and neglect situation.

Comprehensive Intensive Services (CIS)

An intensive community based service to families requiring comprehensive emergency mental health services because of serious emotional or behavioral needs. The program is designed to provide up to six hours of home/community services for up to six months.

Parents Anonymous

1-800-458-7554

Support group designed to assist parents who are at high risk of child abuse or neglect. Groups are anonymous and co-facilitated by both a human services professional and a parent. Meetings are weekly and no charge.

Parent Support Network

736-8844

Warwick Executive Park
250 Centerville Road, Building F
Warwick, RI 02886

1-800-483-8844

An organization where families of children and adolescents with challenging behaviors, emotional disorders, or mental health issues can share concerns and solutions. PSN offers a safe and nurturing environment where meetings and workshops are offered free of charge.

RI Department for Children, Youth, and Families

457-4500

101 Friendship Street
Providence, RI 02908

State Agency responsible for welfare of children and their families. Provides a full range of services, including information, foster care services, placement information, step—parent adoptions and independent adoptions.

Children's Services Cont.

RI FamilyWorks

400 Warwick Avenue
Warwick, RI 02888

1-800-731-0987
467-8414

Free parent support groups are available. This organization reaches out to parents throughout the state who are experiencing stresses and challenges.

Rhode Island Parent Information Network (RIPIN)

500 Prospect Street
Pawtucket, RI 02860
www.ripin.org

727-4144
1-800-464-3399

An organization providing information and training to all families with children and youth in Rhode Island. Run by and for RI parents, RIPIN offers resources and guidance on every topic related to childhood and parenting.

Tourette Syndrome Association

PO Box 2247
Darlington, RI 02681

724-9982

Support and information

Education Opportunities



Adult Literacy Program 1-800-443-1771

One to one tutorial instruction.

Chamber Education Foundation

732-7700

3296 Post Road

Warwick, RI

www.chamberedfoundation.org

Workforce readiness program for adults 18 and older; GED program, employability and technology skills training.

Colleges and Universities

Listing for colleges and universities can be found in the white pages of the telephone book. Some general numbers are given below. Education Departments of some colleges, especially URI and RIC, often will provide special programs for children six years and older to help them with reading and math, etc.

Community College of Rhode Island

825-1000

Knight Campus

400 East Avenue

Warwick, RI 02886

University of Rhode Island

874-1000

Kingston Campus

URI College of Continuing Education

277-5000

80 Washington Street

Providence, RI 02903

Rhode Island College

456-8000

600 Mount Pleasant Avenue

Providence, RI 02907

Coventry School Department

822-9400

222 MacArthur Blvd.

Coventry, RI 02816

Special Education Services/Child Outreach

822-9410

East Greenwich School Department

885-3300

111 Pierce Street

East Greenwich, RI 02818

Special Education/Child Outreach

886-3224

Education Opportunities Cont.

Higher Education Office 277-6560
 560 Jefferson Blvd.
 Warwick, RI

Scholarship and Grant Program

Literacy Volunteers of Kent County 822-9100
 Coventry Public Library
 1672 Flat River Road
 Coventry, RI 02816

Rhode Island Educational Opportunity Center 455-6028
 CCRI Providence Campus
 Providence, RI

Provides assistance to individuals who wish to pursue post-secondary education or special training. Exam preparation, GED, academic advising, assistance with applications, forms etc. Youth and Family Services
 Summitt Plaza
 300 Centerville Road

Rhode Island Tutorial—Referral Services 364-3028
 28 Pond Meadow Road
 Charlestown, RI 02813

Provides free referrals to schools and families requesting one on one tutorial assistance in any subject for any age.

Sawyer School 463-3555
 1122 Warwick Avenue
 Warwick, RI 02888

Basic grants are available for qualifying students for more information, contact the school you wish to attend.

Warwick Adult Education 734-3156
 575 Centerville Road
 Warwick, RI 02886

The following programs are offered *General Adult Education Courses, Adult Vocational Education Courses, and Guidance and Counseling.*

Warwick School Department 737-3300
 34 Warwick Lake Avenue
 Warwick, RI 02889

Special Education Services 734-3052
Child Outreach 734-3245

Education Opportunities Cont.

West Greenwich School Department	397-5125
<i>Special Education Services/Child Outreach</i>	397-7420
West Warwick School Department	821-1180
10 Harris Avenue West Warwick, RI 02893	
<i>West Warwick Special Education Services / Child Outreach</i>	822-8432

Employment and Training Guidance



Child Care Assistance Program 738-7642
100 Meadow Street
Warwick, RI

Career counseling and training. Information on Pell Grants for higher education. Day care assistance for single parents who are returning to work or school. Hours: 8:30 AM—4:00 PM, Monday—Friday.

Operation Forward March 823-1784
TriTown Community Action Agency

Life, world of work, and basic computer skills. Job placement assistance.

Options for Working Parents 272-7510
30 Exchange Street
Providence, RI 02903

Child care resource and referral service.

RI Community Kitchen Training Program 826-3073
RI Food Bank Contact: Ernestine Bugbee Ext. 235
104 Hay Street
West Warwick, RI 02893

Fourteen week culinary arts program offering preparation as a prep-cook or line cook.

Rhode Island Department of Labor and Training 243-9100
50 Airport Road
Warwick, RI 02888

Job referrals, administration of unemployment insurance programs, operates Rhode Island Job Services with comprehensive state wide listing of job opening for all skill levels. JPTA program.

Vocational Rehabilitation 421-7005
40 Fountain Street
Providence, RI

Counseling, evaluation, medical treatment, training and education assistance towards vocational goals for the disabled whose conditions are relatively stable and remediable. Hours: 8:30 AM—4:00 PM, Monday—Friday.

Health Services

Coventry Emergency Room 421-7005
Pawtucket Valley Medical / Surgical Center
71 Sandy Bottom Road
Coventry, RI 02816

Hours: 8:00 AM—9:00 PM, Monday—Friday, 8:00 AM—4:00 PM Weekends

Cranston Health and Family Planning Center 943-1981
1090 Cranston Street
Cranston, RI

Includes health services, food and nutrition programs, WIC, family planning, and internal medicine. Fees vary according to the program. Services Coventry, Cranston, Foster, and Scituate. Medical Assistance and insurance plans accepted.

Hearing Center for the State of Rhode Island 222-3527
Corliss Park
Providence, RI

Provides hearing testing for infants through high school. No fee.

Kent County Memorial Hospital 737-7000
450 Tollgate Road
Warwick, RI 02886

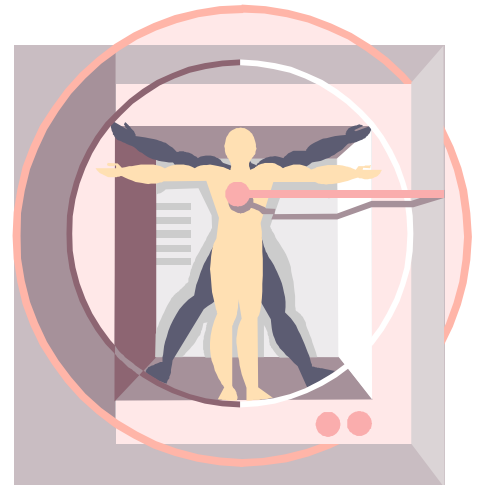
Comprehensive community acute care hospital offering total emergency room services including laboratory and x-rays. Variety of health education programs, support groups available to the public, free community service program KEEP. This program registers minor children's basic medical information along with notarized parental authorization for emergency medical treatment at the hospital's emergency services department (Contact Geri Bollengier to enroll your child or obtain more information at 737-7000, ext. 130).

Kent County Visiting Nurse Association 737-6050
51 Health Lane
Warwick, RI 02886

Provides in-home nursing care, follow up of hospital discharges, and medical emergencies. Hours: 8:00 AM—8:00 PM, Monday—Friday, 8:00 AM - 6:00 PM, Saturday and Sunday.

Midland Medical Services 822-4900
824 Bald Hill Road
Warwick, RI

Hours: 9:00 AM—10:00 PM, Monday—Friday, 8:00 AM—4:00 PM, Saturday and Sunday. Services include lab, X-ray, and family practice. Accept Medicaid, plus other insurance plans.



Health Services Cont.

Rhode Island Department of Health 277-2231
3 Capitol Hill
Providence, RI 02908

For information on specific concerns see below:

Division of Communicable Diseases 277-2577
Division of Family Health 277-2312
Division of Nutrition 277-2309
Immunization Information 277-2577
Lead Control Program 277-2312
Nutrition Hotline (Monday, Wednesday, Friday 9:00 AM—1:00 PM) 1-800-624-2700
RIte Care (for pregnant women needing medical/financial assistance) 464-3453

Rhode Island Hospital 444-4000
593 Eddy Street
Providence, RI 02903

A general hospital offering many different centers of specialized services. Some frequently used programs are:

Behavior Clinic 444-5025
Child Development Center 444-5681
Hearing and Speech Center 444-5485
Lead Clinic / Pedi Clinic 444-5255
Poison Control Center 444-5727
Samuel's Dental Center 444-5285

Saving Sight 738-1150
1800 Post Road
Warwick, RI

Statewide children's vision screening program providing free screening and eyeglasses if not covered by medical insurance. Referrals and literature. No fee. Hours: 9:00 AM—4:00 PM

Warwick Medical Walk in Room 738-6900
1800 Post Road
Warwick, RI 02886

Hours: 8:00 AM—8:00 PM, Monday—Friday, 9:00 AM—5:00 PM, Saturday and Sunday. Includes emergencies, laboratory services, X-rays, family practice. Accepts Blue Cross and most other plans. No medical assistance.

Legal Services



American Civil Liberties Union

831-7171

10 Abbott Park Place, 3rd Floor
Providence, RI 02923

Assists those who believe their civil liberties have been infringed.

Bureau of Family Support

277-2847

77 Dorrance Street
Providence, RI

Provides assistance in establishing paternity, locating parents, and securing support. Collects and distributes child support payments. No fee for TANF recipients; \$20 plus in excess costs for others. Hours: 8:00 AM—4:00 PM.

Family Court of Rhode Island

822-1600

Kent County
222 Quaker Lane
Warwick, RI

Restraining Orders: No fee, must be married or have children in common or blood relative, or minor with significant dating. Having a child is not necessary to file a restraining order.

Legal Aid Society of Rhode Island

331-4665

76 Dorrance Street
Providence, RI

Provides legal counsel for individuals who cannot afford to pay.

Rhode Island Bar Association Lawyer Referral Service

421-7799

115 Cedar Street
Providence, RI 02903

Consultation free with reduced fee program.

Rhode Island Disability Law Center

831-3150

151 Broadway
Providence, RI 02903

Provides legal and other advocacy services for developmentally disabled persons and those with psychiatric disabilities. Advocates for children with special education needs. No fee.

Legal Services Cont.

Rhode Island Legal Services, Inc.

274-2652

56 Pine Street
Providence, RI

Provides legal services free of charge to those who qualify in: public benefits, domestic cases, and landlord-tenant relations. Services statewide, Spanish spoken.

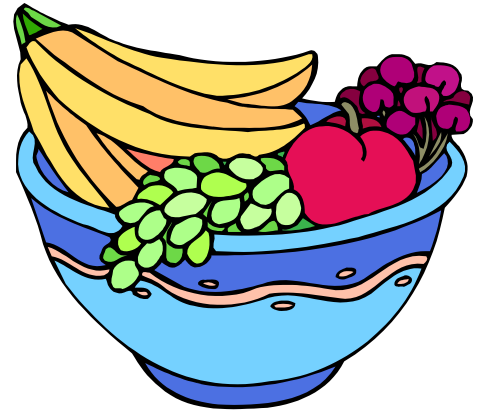
Victims' Witness Assistance Program

274-4400

150 South Main Street
Providence, RI 02903

Helps victims of crime understand their rights and the court process. Gives information on the status of victims' cases, legal and counseling agencies. Contact: Michael A. Cardi

Nutrition Services



Coventry Food Bank
225 MacArthur Blvd.
Coventry, RI

822-9199

Food cupboard. Some clothing may be available. Tuesday, Thursday 9:00 AM—11:00 AM, Tuesday, Thursday, Wednesday Noon-2:00 PM.

Cranston Community Action Health Center
1090 Cranston Street
Cranston, RI

944-1981

Nutritional program run by the Department of Health provides nutritional foods and advice. Services available to RI residents who meet eligibility requirements and show a need for supplemental foods.

East Greenwich Emergency Food
Contact Saint Luke's Episcopal Church
Pierce Street
East Greenwich, RI

884-4416

Emergency food only. Must show proof of East Greenwich residency.

Emergency Food Resource
Contact Warwick Community Action Program
3308 Post Road,
Warwick, RI 02886

732-4660

Food Stamps
59 West Shore Road
Warwick, RI 02889

739-8900

Serves South County and Southern Rhode Island. Provides advice and information on eligibility and problems with Food Stamps. An in person office visit is mandatory. Hours: 8:30 AM—4:00 PM.

House of Hope
PO Box 8608
65 Shippen Avenue
Warwick, RI 02888

463-3324

Clothing cupboard and shelter for two families. Contact: Program Manager Carol Solito. Call to make appointment. Hours: Monday—Wednesday 9:15 AM—Noon, 12:30 PM—2:30 PM.

Nutrition Services Cont.

Our Lady of Mary Church

884-4410

Division Street
East Greenwich, RI 02818
Contact: Jerry Sheres

9:00 AM—5:00 PM, Monday—Friday. Call 884-4968 if no answer.

SERVE Host Organizations

Serve is a nation-wide neighborhood based self-help food distribution program. Fee is \$16.00 cash or food stamps and two hours community service for a food/supply package worth \$30—\$40.

Warwick

First Baptist Church

455-7373

First Congregational Church of Warwick

738-3377

Hillsgrove United Methodist Church

885-413580 or 781-3695

East Greenwich

East Greenwich Serve

885-4247

Coventry

Church of Saint Andrew and Saint Philip

397-9964 or 397-3957

Washington Methodist Church

821-1931

West Greenwich

West Greenwich Points of Light

397-2366

West Warwick

Emmanuel Lutheran Church

823-8892

West Warwick Food Cupboard

828-0310

1293 Main Street
West Warwick, RI 02893

No appointment necessary. Monday, Wednesday, and Friday 10:00 AM—2:00 PM.

Women, Infants, Children (WIC)

732-4660 ext. 3

West Bay Community Action Program
205 Buttonwoods Avenue
Warwick, RI

737-1150

Clothing



The Clothing Collaborative 421-5753
115 Cedar Street
Providence, RI

Free professional clothing and accessories for low income/FIP persons entering the workforce. By appointment only.

The Donate Shop 738-6663
95 Airport Road
Warwick, RI

Resale clothing store for children and adults. Hours: Wednesday, Thursday, Saturday 10:00 AM—5:00 PM, Friday 10:00 AM—7:00 PM

First Impressions 732-7700
3292 Post Road
Warwick, RI 02886

Operated by the RI Commerce Academy. Gently worn brand name clothing.

Food Cupboard 828-0310
1293 Main Street
West Warwick, RI

Three free clothing items per visit for West Warwick residents. 10:00 AM—2:00 PM Monday, Wednesday, and Friday.

House of Hope 463-3324
PO Box 8608
Warwick, RI or
65 Shippen Avenue
Warwick, RI

Clothing cupboard and shelter for two families. Contact: Program Manager Carol Solito. Call to make appointment. Hours: Monday—Wednesday 9:15 AM—Noon, 12:30 PM—2:30 PM.

Salvation Army 823-7030
269 Washington Street
West Warwick, RI

201 Pitman Street 421-5270
Providence, RI

Clothing and furniture, etc. offered.

Clothing Cont.

Shawomet Baptist Church

1642 West Shore Road
Warwick, RI 02889

739-7184

9:00 AM—1:00 PM, Saturday

Washington Street Methodist Church

Washington Street (next of Police Station)
Coventry, RI

821-1931

Hours: Thursday and Saturday 10:00 AM—2:00 PM

Family Field Trips and Fun Cont.

Impossible Dream

823-5566

575 Centerville Road
Warwick, RI 02886

Playground open to general public from August-October. Handicap playground equipment available. No fee. Hours: 9:30 AM—3:00 PM, Monday– Saturday.

Kent County YMCA

828-0130

900 Centerville Road
Warwick, RI 02886

Offers recreational programs for all ages. Fees vary with services. Financial assistance available for membership and programs.

Roger Williams Park

785-3510

1100 Elmwood Avenue
Providence, RI

Hours: 9:00 AM—4:00 PM, Monday—Friday, 9:00 AM-5:00 PM Saturday and Sunday. \$6 adults, \$3.50 children ages 3-12, children 2 and under free.

Warwick Parks and Recreation Department

738-2000

975 Sandy Lane
Warwick, RI 02888

ext. 6805

Offers a variety of programs for ages 6–12; many programs free of charge.

Warwick Public Library

739-5440

600 Sandy Lane
Warwick, RI 02889

Apponaug Branch

739-6411

Conimicut Branch

737-6546

Norwood Branch

941-7545

West Warwick Parks and Recreations

822-9200

West Warwick Civic Center
100 Factory Street
West Warwick, RI 02893

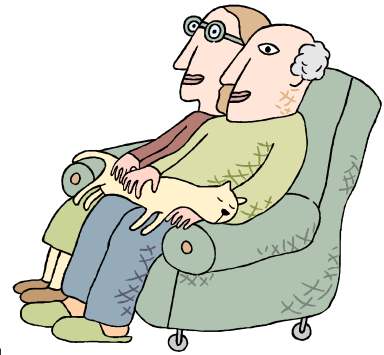
Offers summer programs with special outings and others year round. Fees vary according to activity.

West Warwick Public Library

7828-3750

1043 Main Street
West Warwick, RI 02893

Senior Citizens Services



Central Adult Day Care Services

739-2844

3270 Post Road / PO Box 7069
Warwick, RI 02886

Provides services to frail, elderly, and impaired adults and individuals with Alzheimer's disease at two adult day centers, through an in-home services program, and through a transportation program. Day center services are available Monday—Saturday and include nursing care, personal hygiene, supervised activities, nutritious meals and transportation. In-home services are available 7:00 AM—11:00 PM seven days a week. Support groups and educational sessions are also offered.

Coventry Senior Citizens Center

822-9175

50 Wood Street

Meal site (\$1.50 donation) 8:30 AM—4:30 PM. Offers a variety of programs including health screenings, legal clinics, income tax assistance, social services, recreational activities, arts and crafts and RSVP program. Serves ages 55 and older; no residency requirements.

Elderly Nutrition Program

738-3179

389 Greenwich Avenue
Warwick, RI

Serves lunch to those 60 years or older. Noon, Monday—Friday.

Foster Grandparents

822-4450

20 Factory Street
West Warwick Senior Citizens Center
West Warwick, RI

Trains and employs low-income persons over 60 to help children with special needs.

J.O.N.A.H.

738-6666

830 Oakland Beach Avenue
Warwick, RI

Provides aid to elderly, including domestic aid, information, referral, outreach, arts and crafts, rehabilitative services, job training and meal site. Open to eligible Oakland Beach residents, handicapped and 60 year and over. Hours: 8:30 AM—4:30 PM.

Meals on Wheels

351-6700

145 Oaklawn Avenue
Providence, RI

Serves meals once a day to the ill, handicapped, convalescent, and elderly.

Senior Citizens Services Cont.

Retired Senior Volunteer Program (RSVP)

732-4660

195 Buttonwoods Avenue
Warwick, RI

Provides training and placement of senior citizens in volunteer assignments for ages 60 and over. Hours: 8:30 AM—4:30 PM.

West Warwick Senior Center

822-4450

20 Factory Street
West Warwick, RI 02893

Programs and activities for senior citizens, including arts and crafts, recreational activities, meal site, trips, operates gift shop, health screenings, information and referral. Serves ages 55 and older (60 and over for meal site). Services statewide. \$1.50 donation for meals. Hours: 8:30 AM—4:00 PM, Monday—Friday, Sunday dinner once or twice a month, Noon—4:00 PM.

Family Support and Emergency Services



American Red Cross
Providence, RI

831-7700

Hours: 8:30 AM—5:00 PM, Monday—Friday. 24-hour telephone service for emergencies. Training in CPR, on First Aid, HIV education, vocational training program, etc.

Children's Friend and Services
153 Summer Street
Providence, RI 02903

331-2900

Services include adoption, child placement, services to unmarried mothers, pre-adoption, foster placements, and counseling. Fee scale. Hours: 8:30 AM—7:30 PM, Monday—Thursday, 8:30 AM—5:00 PM.

Department of Human Services, Coventry
195 MacArthur Blvd
Coventry, RI 02816

828-2440

Assists residents of Coventry who need public assistance and meet eligibility requirements. Administers day care reimbursement program.

Department of Human Services, City of Warwick
3275 Post Road
Warwick, RI

738-2000
ext. 6019

Oversees human service programs in Warwick, including welfare, senior citizens activities, services for the handicapped, drug abuse prevention, and education.

Department of Human Services, West Warwick
600 New London Avenue

462-6500

Assists residents of West Warwick who need public assistance and meet eligibility requirements. Administers day care reimbursement program.

Elizabeth Buffum Chase (EBC) House
PO Box 9476
Warwick, RI

738-1700

Provides temporary shelter for women in crisis. Offers information, support, and referrals, legal, welfare, and housing advocacy. Also counseling and support groups. Hours: 9:00 AM—5:00 PM, Monday-Friday. 24 hour hotline.

Family Support and Emergency Services Cont.

Family Life Resource Center 461-4640
311 Doric Avenue
Cranston, RI

Sexual Abuse counseling services. Sliding fee scale.

Family Services 331-1350
55 Hope Street
Providence, RI

Professional counseling services for individual and families seeking help with personal problems in the areas of marriage, parent-child relationships, personal adjustments, problems of aging. Also provides foster family care, family life education. Sliding fee scale and accepts most insurance plans. Hours: 8:30 AM—8:00 PM, Monday-Thursday, 8:30 AM—5:00 PM, Friday.

Good Samaritan—Suicide Hotline 272-4044

House of Hope 463-3324
Aster Street
Warwick, RI 02888

Provides temporary shelter to families in need. Also offers clothing, furniture, and food cupboard to needy families.

Kent County Mental Health Center 738-4300
50 Health Lane
Warwick, RI

Provides mental health and educational services to residents of Kent County, including psychotherapy, group therapy, medical supervision, information and referral. Provides 24 hour emergency services. Serves all ages on a sliding fee scale. Hours: 8:30 AM—7:30 PM, Monday—Thursday, 8:30 AM—4:30 PM, Friday.

Summit Plaza—300 Centerville Road 738-1338
Warwick, RI 02886

Comprehensive counseling and psychiatric services to adults: 24 hour emergency services, individual, group, and family counseling. psychiatric assessment and medication monitoring, alcohol and drug counseling. Adult day treatment program, community support program, and residential psychiatric program. Fees covered by Rite Care or private insurers.

Rhode Island Disability Law Center 831-3150
349 Eddy Street
Providence, RI 02903

Provides advocacy services for developmentally disabled persons and their families. Information and referral services available. Hours: 9:00 AM—5:00 PM, Monday-Friday.

Family Support and Emergency Services Cont.

Rhode Island Sexual Assault and Trauma Center 421-4100
300 Richmond Street
Providence, RI

Provides immediate and long-term support to victims of rape and sexual assault. Will meet victims at hospital, police station, and/or court. Foreign languages: Spanish, Portuguese. Counseling for children ages 4 and up is also provided. 24 hours a day, seven days a week. Sliding scale and most insurance plans accepted.

Sexual Assault Victimization Intervention Service (SAVIS) 739-7217
626 Tollgate Road
Warwick, RI

Individual, family, and group counseling around sexual assault. Offers smoking cessation clinic.

Sojourner House 861-6191
2 Richmond Square
Providence, RI 02906

Shelter Hotline 765-3232

Offers support, information, and referrals for women who are or have been victims of domestic violence. Statewide service. 24 hours 7 days a week.

Travelers Aid 351-6500
177 Union Street
Providence, RI

State wide social service agency. Multiple services, call for details.

United Way 521-9000
229 Waterman Street
Providence, RI 02906

24 hour information and referral service.

Victim's Witness Program 274-4400
Attorney General's Office
1050 South Main Street
Providence, RI

Victim's of crime or sexual assault can receive help, counseling, and other services.

Family Support and Emergency Services Cont.

Warwick Department of Human Services (DHS)

739-9530

100 Meadow Street
Warwick, RI

Assists residents of Warwick who need public assistance and meet eligibility requirements. Administers day care reimbursement program.

West Bay Community Action, Inc.

732-4660

205 Buttonwoods Avenue
Warwick, RI 02886

Provides a variety of programs for low-income individuals of all ages. Including:

- Outreach—Referral Service* 732-4660
- Warwick Alcohol and Family Counseling* 738-1760
- Food Stamp Counseling, Emergency Food and Surplus Commodities* 732-4660
- WIC* 737-1150
- Housing and Energy* 732-4660
- New and Used Clothing Bank* 732-4660
- Retired Senior Volunteer Program* 732-4660
- Elderly Nutrition Program* 732-4660
- Nutrition Program* 732-4660
- Alcohol, Drug and Family Counseling* 732-5656

Hours: 8:30 AM—4:30 PM, Monday—Friday. Provides a variety of programs for low-income individuals of all ages.

Women’s Center, Inc.

861-2760

PO Box 6692
Providence, RI

24 hour hotline and emergency shelter service. Services women 18 years or older and children accompanied by a parent or guardian. Provides temporary shelter to women and their children who are in personal crisis. Offers information, referral and support services in areas of housing, employment counseling, legal help, and medical services. Statewide program. Fee by donation. Child care 7:30 AM– 5:00 PM. Hours: 9:00 AM—5:00 PM.

Fuel Assistance Programs



Dire Emergency Fund

421-9700

Sponsored by several church organizations and is provided only to those threatened by a loss of heat in freezing weather and who as no other resources available. Contact:

*Community Service and Advocacy
83 Stewart Street
Providence, RI*

Heating Assistance Agencies

<i>Catholic Diocese</i>	<i>83 Stewart St. Providence</i>	<i>421-7833</i>
<i>Interfaith Community Fund</i>	<i>83 Stewart St. Providence</i>	<i>421-9700</i>
<i>RI Good Neighbor Energy Fund</i>	<i>Salvation Army</i>	<i>421-0956</i>
<i>Urban League</i>	<i>246 Prairie Ave., Providence</i>	<i>351-5000</i>

<i>St. Michael's Church</i>	<i>239 Oxford Street</i>	<i>781-7210</i>
<i>St. Vincent de Paul</i>	<i>188 Dexter Street, Routh and Family Services</i>	
<i>Summitt Plaza</i>		
<i>300 Centerville Road</i>		

Kent County Heating Assistance

Pays a portion of the heating bills of low-income persons and their families.

<i>West Bay Community Action</i>	<i>732-4660</i>
<i>205 Buttonwoods Avenue</i>	
<i>Warwick, RI</i>	

<i>West Warwick Senior Center</i>	<i>822-4450</i>
<i>20 Factory Street</i>	
<i>West Warwick, RI</i>	

Other Frequently Used Resources

Big Brothers of Rhode Island

432-9955

330 Pawtucket Avenue
East Providence, RI

State-wide agency that changes the odds for boys-at-risk ages 7 to 14. Matches boys with a male volunteer who becomes his role model, mentor, and friend. Hours: 8:30 AM – 4:30 PM.

Big Sisters of Rhode Island

461-0310

1660 Broad Street
Cranston, RI 02905

State-wide agency that changes the odds for girls-at-risk ages 7 to 14. Matches girls with a female volunteer who becomes her role model, mentor, and friend.

Childhood Lead Action Project

785-1310

421 Elmwood Avenue
Providence, RI 02907

Provides education to families whose children are at risk of exposure to lead.

Coalition for Consumer Justice

521-1534

1468 Broad Street

Organizes action and support for issues which affect the needs of low income, elderly and handicapped RI consumers. Hours: 9:30 AM—6:00 PM, Monday—Friday.

Latino Multi-Cultural Intervention Services

781-46040
ext. 129

55 Hope Street
Providence, RI

Provides outpatient mental health and substance abuse services. Also provides family life education, child welfare, and foster care services. Sliding fee scale and most insurance plans accepted.

Our Lady of Mercy Church—Outreach Services

884-4410

65 Third Street
East Greenwich, RI

Multiple services offered, including transportation.

Rhode Island Furniture and Clothing Bank

831-5511

25 Acorn Street, Building 34
Providence, RI 02903-1087

Shelter Clearing House

421-9700
1-800-367-2700

Helps homeless families locate shelter.

Telephone Company Lifeline

462-3361

Discounts offered to those on TANF, GPA, SSI, and Food Stamp recipients. SSDI not serviced.

Emergency Numbers

All Emergencies	911
Warwick Police	468-4200
Warwick Fire Department	468-4005
West Warwick Police	821-4323
West Warwick Fire Department	821-4211
Poison Control	444-5727
AIDS Hotline	831-5522
Child Abuse Hotline	1-800-RI-CHILD
United Way Helpline	1-800-367-2700 521-9000
Shelter Hotline	1-800-262-3991 765-3232
Good Samaritans—Suicide Hotline	272-4044
Rape Abuse Hotline	1-800-551-0008
Rape Crisis Center	421-4100
YOUR DOCTOR	_____
YOUR DENTIST	_____
OTHER NUMBERS	_____

